



# Product Data Sheet

## H-IT™ TIE WIRE ANCHOR

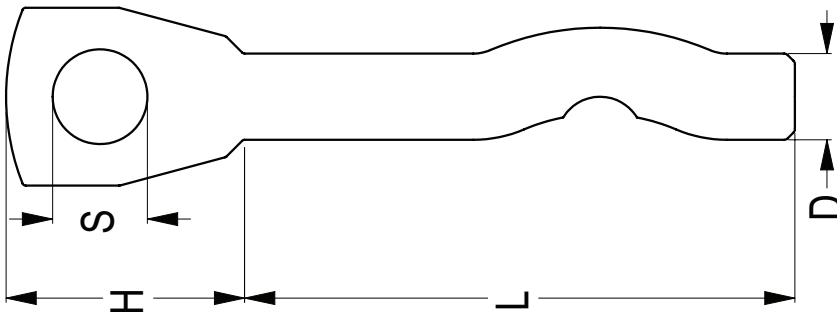
**Material:** AISI 1040 Carbon Steel

**Finish:** Zinc Plate  
Electroplated Zinc Coating thickness 5.0µm (min.)

**Application:** Mechanical anchor for fast and easy installation in concrete, solid brick or stone and core filled block.  
Internal use only.



Part	QFind	Size	Length	Tie wire hole	Head height	Pack
		D (mm)	L (mm)	S Ø	H (mm)	Qty
MHAHTZTM05	MHA128	5.0	34	Ø6.0	16	100
MHAHTZTM065	MHA129	6.5	30	Ø7.3	22	100





# Product Data Sheet

## H-IT™ TIE WIRE ANCHOR

### Installation Specifications

Part	Min. Embedment Depth	Drill Diameter	Head width	Min. Spacing	Min. Edge Distance
	(mm)	(mm)	(mm)	(mm)	(mm)
MHAHTZTM05	20	5.0	10.3	50	60
MHAHTZTM065	25	6.5	13.5	65	78

### Load Performance

		Load in Tension(kN)			Load in Shear(kN)		
Anchor Diameter	Embedment Depth	Concrete Compressive Strength			Concrete Compressive Strength		
(mm)	(mm)	25MPa	32MPa	40MPa	25MPa	32MPa	40MPa
Ø5	22	0.9	1.0	1.0	1.5	1.6	1.6
	25	1.0	1.1	1.1	2.1	2.2	2.2
	32	1.2	1.5	1.7	2.8	3.1	3.2
Ø6.5	22	1.0	1.1	1.2	2.6	2.8	2.9
	25	1.2	1.3	1.4	2.9	3.1	3.2
	32	1.5	2.0	2.1	3.2	3.7	3.9

### Installation Diagram

