



Product Data Sheet

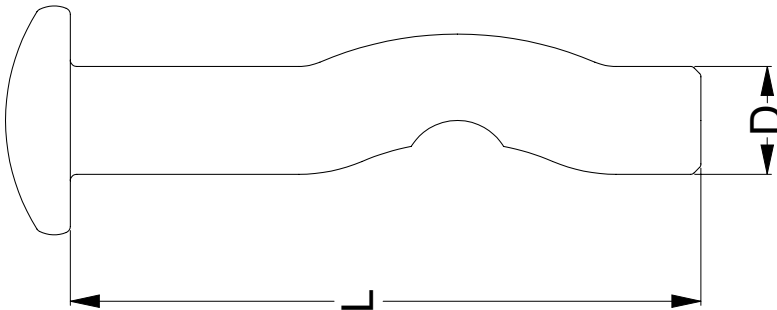
H-IT™ SS 316 MUSHROOM ANCHOR

Material: 316 Stainless

Application: Mechanical anchor for fast and easy installation in concrete, solid brick or stone and core filled block. Suitable for tamper proof applications.



Part	QFind	Size	Length	Pack
		D (mm)	L (mm)	Qty
MHA16PMM050025	MHA100	5.0	25	100
MHA16PMM050032	MHA101	5.0	32	100
MHA16PMM050038	MHA102	5.0	38	100
MHA16PMM050050	MHA103	5.0	50	100
MHA16PMM065038	MHA104	6.5	38	100
MHA16PMM065050	MHA105	6.5	50	100
MHA16PMM065075	MHA106	6.5	75	100





Product Data Sheet

H-IT™ SS 316 MUSHROOM ANCHOR

Installation Specifications

Part	Min. Embedment Depth	Max. Fixture Thickness	Drill Diameter	Head Diameter	Head Height	Min. Spacing	Min. Edge Distance
	(mm)	(mm)	(mm)	(mm)	(mm)	(mm)	(mm)
MHA16PMM050025	20	3	5.0	11	3.0	50	60
MHA16PMM050032	20	6	5.0	11	3.0	50	60
MHA16PMM050038	20	10	5.0	11	3.0	50	60
MHA16PMM050050	20	18	5.0	11	3.0	50	60
MHA16PMM065038	25	6	6.5	12	3.2	65	78
MHA16PMM065050	25	18	6.5	12	3.2	65	78
MHA16PMM065075	30	42	6.5	12	3.2	65	78

Load Performance

		Load in Tension(kN)			Load in Shear(kN)		
Anchor Diameter	Embedment Depth	Concrete Compressive Strength			Concrete Compressive Strength		
(mm)	(mm)	25MPa	32MPa	40MPa	25MPa	32MPa	40MPa
Ø5	22	0.8	1.0	1.0	1.4	1.5	1.5
	25	1.0	1.2	1.2	1.9	2.0	2.1
	32	1.2	1.5	1.6	2.5	2.7	2.8
Ø6.5	22	1.0	1.1	1.1	2.3	2.5	2.6
	25	1.1	1.2	1.3	2.6	2.8	2.9
	32	1.5	1.7	1.9	2.9	3.1	3.2

Installation Diagram

