

# DID YOU KNOW?

about our...



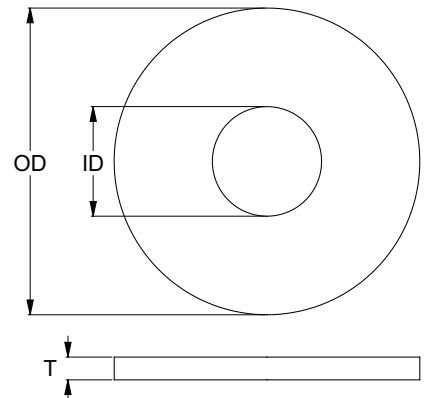
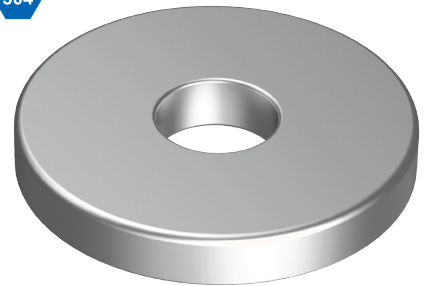
**NEW  
PRODUCT**

## Extra Large Flat Round Washer

### EXTRA LARGE FLAT ROUND WASHER 304 STAINLESS / AISI 304/A2

| Part           | Diameter | OD<br>(mm) | ID<br>(mm) | Thickness<br>(mm) |
|----------------|----------|------------|------------|-------------------|
| WX04PLM1204405 | M12      | 45.0       | 13.5       | 5.0               |
| WX04PLM1605005 | M16      | 51.0       | 17.5       | 5.0               |

304



#### FEATURES

- Large size allows the load to be distributed across a greater surface area
- Protects the surface material from damage
- Helps to prevent the nut from loosening
- Can be used on slotted and oversized holes
- Effective spacer for gaps or to take up additional bolt length

#### APPLICATIONS

- Used in electrical distribution applications

Disclaimer: while every reasonable effort has been made to ensure that this document is correct at the time of printing, Hobson Engineering®, its agencies and employees disclaim all liability in respect to anything or the consequences of anything done or omitted regarding the whole or any part of this document.

Bolt Tension | Anti-Vibration | Product Reliability | Traceability

[hobson.com.au](http://hobson.com.au) **QUALITY FASTENERS SINCE 1935**



231018DYK