

DID YOU KNOW?

about our...



**NEW
PRODUCT**

Flat Tower Washer

FLAT TOWER WASHER HOT DIP GALVANISED / AS 1559 / MILD STEEL

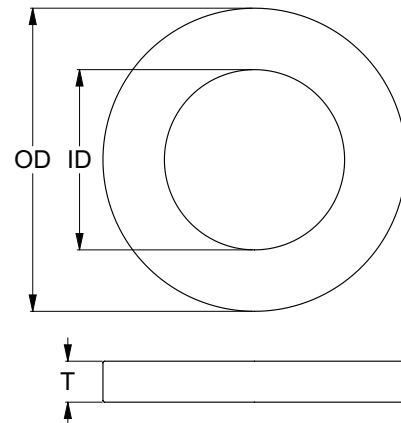
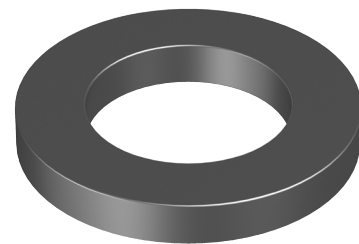
Part	Size	Outer Diameter	Inner Diameter	Thickness
		OD (mm)	ID (mm)	T (mm)
WRMSTFGM12	M12	24	14	5
WRMSTFGM16	M16	30	18	5
WRMSTFGM20	M20	37	22	5
WRMSTFGM22	M22	41	24	5
WRMSTFGM24	M24	44	26	5

FEATURES

- Fully conforms to AS 1559 requirements
- Hot dip galvanised to AS/NZS 1214
- Increased thickness over standard flat washers

APPLICATIONS

- For use with tower bolt assemblies



Disclaimer: while every reasonable effort has been made to ensure that this document is correct at the time of printing, Hobson Engineering®, its agencies and employees disclaim all liability in respect to anything or the consequences of anything done or omitted regarding the whole or any part of this document.

Bolt Tension | Anti-Vibration | Product Reliability | Traceability

hobson.com.au **QUALITY FASTENERS SINCE 1935**

