

DID YOU KNOW?

about our... **Z/P Clawbolt® Pro Wedge Anchor**



Page 1 of 3

CLAWBOLT®

Pre-assembled single unit wedge anchor

Three options available:

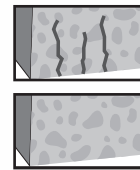
1. M8 with ETA Approval (Option 1) and Fire Rating.
2. M10 and M16 with ETA Approval (Option 1), Fire Rating and Seismic Certified (C1).
3. M12 and M20 with ETA Approval (Option 1), Fire Rating and Seismic Certified (C1 and C2).

Features

- » Quick and easy to install
- » Immediate loading
- » Intended working life- 50 years
- » ETA Approval- Option 1
- » Fire Rated

Applications

- » Suitable for cracked and non-cracked concrete
- » Pallet racking
- » Formwork support fastening
- » Mechanical, electrical and pipe bracket fixing
- » Structural columns and beams
- » Facade installation
- » Stadium seating
- » Guide and hand rails



CLAWBOLT® PRO WEDGE ANCHOR ZINC PLATED (ROHS COMPLIANT) / ETA OPT 1 / FIRE RATED

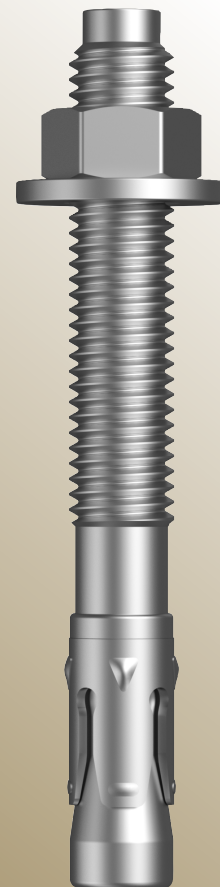


Part	QFind	Size	Length (mm)	Pack Qty
EAWMSZD15M080080	EAW100	M8	80	100
EAWMSZD15M080095	EAW101	M8	95	100
EAWMSZD15M080115	EAW102	M8	115	50
EAWMSZD15M080130	EAW103	M8	130	50

CLAWBOLT® PRO WEDGE ANCHOR ZINC PLATED (ROHS COMPLIANT) / ETA OPT 1 / C1 / FIRE RATED



Part	QFind	Size	Length (mm)	Pack Qty
EAWMSZD17M100090	EAW105	M10	90	50
EAWMSZD17M100105	EAW106	M10	105	50
EAWMSZD17M100120	EAW107	M10	120	50
EAWMSZD17M100140	EAW108	M10	140	50
EAWMSZD17M100185	EAW109	M10	185	50
EAWMSZD17M160125	EAW121	M16	125	25
EAWMSZD17M160145	EAW122	M16	145	20
EAWMSZD17M160175	EAW123	M16	175	20
EAWMSZD17M160220	EAW124	M16	220	10



**NEW
PRODUCT**

CONSTRUCT PRO

Bolt Tension | Anti-Vibration | Product Reliability | Traceability

hobson.com.au **QUALITY FASTENERS SINCE 1935**



DID YOU KNOW?

about our... **Z/P Clawbolt® Pro Wedge Anchor**



Page 2 of 3

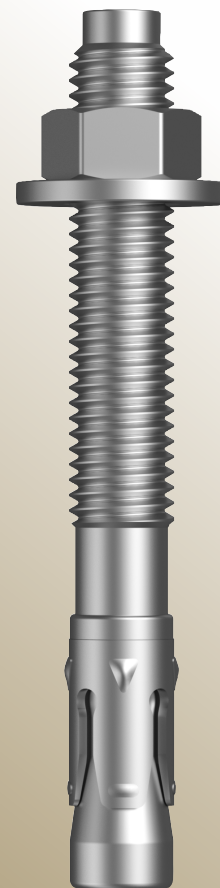
CLAWBOLT® PRO WEDGE ANCHOR ZINC PLATED (ROHS COMPLIANT) / ETA OPT 1 / C1 C2 / FIRE RATED



Part	QFind	Size	Length (mm)	Pack Qty
EAWMSZD18M120110	EAW111	M12	110	25
EAWMSZD18M120120	EAW112	M12	120	25
EAWMSZD18M120150	EAW113	M12	150	25
EAWMSZD18M120180	EAW114	M12	180	25
EAWMSZD18M120200	EAW115	M12	200	25
EAWMSZD18M200170	EAW125	M20	170	10

**NEW
PRODUCT**

CONSTRUCT PRO



Bolt Tension | Anti-Vibration | Product Reliability | Traceability

hobson.com.au **QUALITY FASTENERS** SINCE 1935



2005051DYK

DID YOU KNOW?

about our... **Z/P Clawbolt® Pro Wedge Anchor**



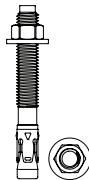
Page 3 of 3




Label Sample

ZINC PLATED (ROHS COMPLIANT)
 CLAWBOLT PRO (WEDGE ANCHOR)
 ETA OPT 1 / C1 C2 / FIRE RATED

M12 X 110


QFind: 25 pcs
EAW111








CONSTRUCT - PRO

EAWMSZD18M120110 DOC: 10016



PO: 76158 NS2
CTN WGT: 2.57kg



Hobson Engineering Co Pty Ltd, 10 Clay Place, Eastern Creek, NSW 2766, Australia

**NEW
PRODUCT**

CONSTRUCT PRO

Logo's Explained



= ETA
European Technical Assessment



= Cracked concrete



= Seismic rated



= Non-cracked Concrete



= Fire resistance rated

Conxtract® PRO Carton



Bolt Tension | Anti-Vibration | Product Reliability | Traceability

hobson.com.au **QUALITY FASTENERS SINCE 1935**

